



1080P Full HD

VT2000

FORWARD-FACING VEHICLE CCTV

The **VT2000** is a full HD 1080P connected vehicle telematics camera, featuring instant remote cloud upload, live view snapshots, automatic health checking, built-in GPS/GLONASS, designed to deliver high-quality videos of incidents instantly to our data platform.



Industry-leading, connected and HD-quality vehicle camera and telematics system



High-quality super-wide 170° viewing angle



Provides HD images before, during and after an incident



Option to monitor driver behaviour from anywhere using the VisionTrack cloud platform



First Notification of Loss (FNOL), G-shock and panic alerts



Accurate G-shock sensor measures impact force and driving style



Built-in GPS and GLONASS receiver with self-checking notifications



Full integration with HERE maps with accurate speed limit data



24 hour red alert monitoring



IMMEDIATE

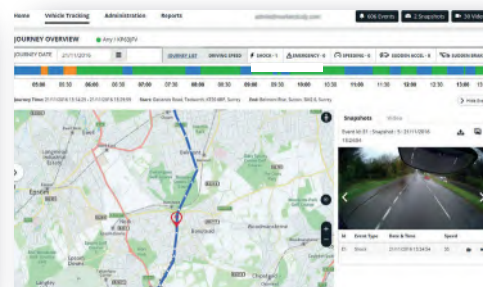
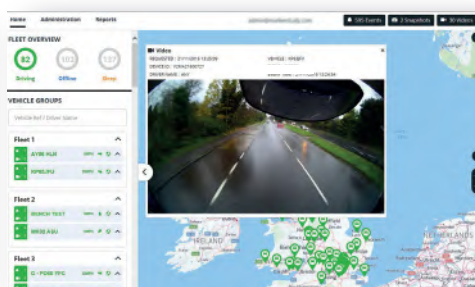
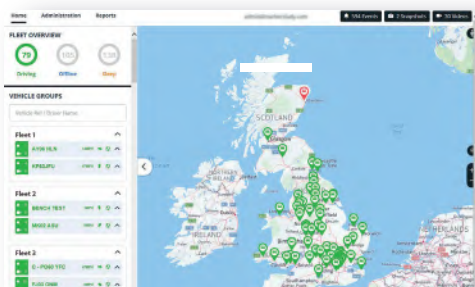
Access to speed, G-force, images and videos when an incident occurs

POWERFUL

Cloud-based software platform offering near real-time monitoring of vehicles & driver behaviour

INSTANT

First Notification of Loss (FNOL) alert so users can see who was at fault



Specifications:

| | |
|-------------------------------|---|
| Image sensor | 1/3" 3-megapixel CMOS sensor |
| DSP | Standard DSP |
| Angle of view | 170° (H: 139.5, V: 71.5, +5%) |
| Band support | WCDMA Band1 (2,100MHz)/ Band8 (900MHz) |
| Max data rate | UL: 5.76Mbps, DL: 7.2Mbps |
| Video resolution | 1080P HD (1920x1080) 720P (1280x720), VGA (640x480) |
| Recording speed | Up to 30 fps |
| Recording mode | Continuous , Event, Dual-mode |
| Memory | 128GB (codec encrypted) Class 10 SD card |
| | Cloud Storage – Microsoft Azure - ISO 27001, HIPAA, FedRAMP, SOC 1 and SOC 2 accredited |
| GPS/GLONASS | Internal GPS /GLONASS |
| G-sensor | Internal 3-axis G-sensor |
| External Panic Button | The system can be connected with an external Panic Button |
| Gyro | 3-axis (X,Y,Z), output rate: 100 Hz, |
| RTC | Internal battery |
| Speaker | Recording start, error |
| Alarm In/Out | 2 x Alarm In, 1 x Alarm Out |
| LED | Record (Blue LED), Communication (Red LED) |
| Super capacitor | Enable recording of last file and shut down |
| Power input | 12V to 24V DC permanent wiring kit input voltage: DC 5V, 3A |
| Delayed power shutdown | Supports delayed power shutdown |
| Power consumption | 15W |
| Size / weight | 91mm X 56mm X 56mm (w/o bracket) , 150g |
| Operation temp. | -10°C+55°C |

Recording time table*:

| Resolution | Quality | FPS | 128 GB | Resolution | Quality | FPS | 128 GB |
|-------------------------|----------|-----|-----------|--------------------|----------|-----|-----------|
| 1080P HD (1920x1080) | Standard | 15 | 94 hours | 720P (1280x720) | Standard | 30 | 91 hours |
| | | 10 | 121 hours | | | 15 | 151 hours |
| | | 5 | 166 hours | | | 10 | 166 hours |
| | | 1 | 166 hours | | | 5 | 166 hours |
| | High | 15 | 79 hours | | High | 30 | 69 hours |
| | | 10 | 102 hours | | | 15 | 116 hours |
| | | 5 | 145 hours | | | 10 | 149 hours |
| | | 1 | 166 hours | | | 5 | 166 hours |
| | Super | 15 | 68 hours | | Super | 30 | 56 hours |
| | | 10 | 88 hours | | | 15 | 94 hours |
| | | 5 | 125 hours | | | 10 | 121 hours |
| | | 1 | 166 hours | | | 5 | 166 hours |
| | | | | | | 1 | 166 hours |

*This table is a guideline only. Actual results may vary depending on a variety of factors on the road.